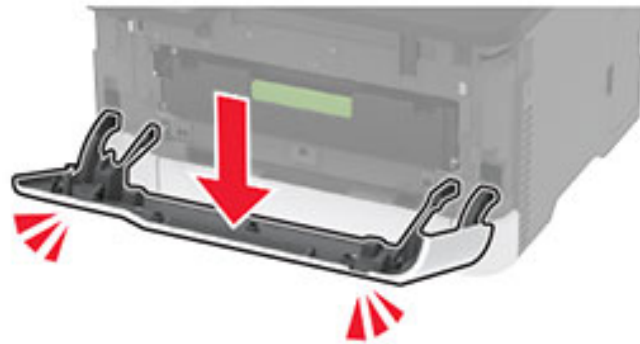


Lexmark MC3426i

Replacing a print cartridge

Note: If the tray is extended, then remove it before replacing a cartridge.

1. Open the front door, and then firmly push it down.

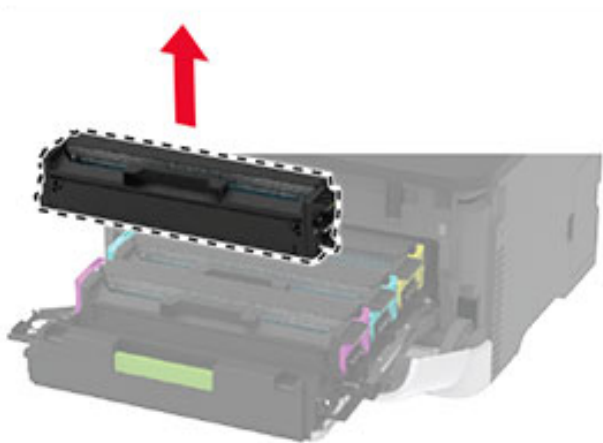


2. Pull out the print cartridge tray.



3. Remove the used print cartridge.





4. Unpack the new print cartridge.

Warning—Potential Damage: Do not expose the underside of the print cartridge to direct light. Extended exposure to light may cause print quality problems.

Warning—Potential Damage: Do not touch the underside of the print cartridge. Doing so may affect the quality of future print jobs.



5. Insert the new print cartridge.



6. Insert the print cartridge tray, and then close the door.